



INSIDE THIS ISSUE

AGM 2025 — 11 th June (wed) to 14 th June 2025 (sat) Prague, Czech Republic	3 - 7
Business Update — Allcargo Tanzania	8
Business Update — CCI Group	9 - 10
Business Update — RIF	11- 12
Business Update — Windlog	13
Know Your Agent— Konapon Corporation, Japan	14
HCL Network Update — Out going Agent	15
ARCS Hyperion Netting Process Walkthrough	16 - 17
Holiday List	18 - 19

Eid Mubarak

Happy & Joyous



HCL AGM 2025 — Prague, Czech Republic

HCL ANNUAL GENERAL MEETING 2025

Dates: 11th June (wed) to 14th June 2025 (sat)

Venue: NH Prague City,
Mozartova 261/1, Praha 15000, Czechia
TEL: 420-257-153111

RSVP: networkadmin@hcllogistics.eu



HCL AGM 2025 — Prague, Czech Republic

Dear All,

SAVE THE DATE - HCL AGM 2025 was published in the October 2024 Newsletter. We are happy to announce the Venue of the AGM as under:

We would like to invite you to **HCL Annual General Meeting 2025**, which will be held at **NH Prague City, Prague, Czech Republic** from **11th June (wed) to 14th June 2025 (sat)**. Request you to please block your diary for these dates. A detailed agenda & other details will be sent over the coming weeks.

The structure of this three-day event will be like previous years' meetings. The agenda includes one-on-one business meetings, panel discussions, and social networking to help participants make contacts and form partnerships.

We look forward to welcoming you in June. Please confirm your attendance at your earliest convenience. **Please find the registration form attached.** Request you to please share the Registration form by **27th March (Thursday)**. Kindly provide separate form for each member participating from your organization.

FEE

EURO 1900/- Single participant (per person)

EURO 1700/- Room sharing basis (per person)

The above cost includes :

All Conference costs for 2 days inclusive of Lunch and coffee breaks i.e.: 12th & 13th June

3 nights stay with B&B at the **NH Prague City**, i.e.: 11th, 12th & 13th June.

2 Dinners i.e.: 11th & 13th June

Please read rest of the details mentioned in the Registration Form.

We hope very much that this year you are able to participate and look forward to your response to make the necessary arrangements in a timely manner.

HCL AGM 2025 — Prague, Czech Republic



Sponsorship Opportunities:

- Welcome Party
- Coffee Breaks
- Pens
- Lanyards – **SOLD OUT to 3sixty Global**
- Conference Bags



Welcome Party Package

EURO 1500.00

(limited to 1 package only)

- Roll-up Banner
- Recognition in opening speech
- Print advertisement in conference booklet
- Digital advertisement during 1to1s
- Company print advertisement in conference bag (needs to be provided)
- Exclusive Newsletter announcements

HCL AGM 2025 — Prague, Czech Republic

Coffee Break Package

EURO 500.00 per package

(limited to 3 packages only)



- 1x Roll-up Banner
- Print advertisement in conference booklet
- Digital advertisement during opening speech and 1to1s
- Newsletter announcements

Pen Package

EURO 500.00

(limited to 1 package only)

- Company Logo on pens, provided by the network
- Pens will be provided in conference bags and on 1to1 tables
- Print advertisement in conference booklet
- Digital advertisement during opening speech and 1to1s
- Newsletter announcements

HCL AGM 2025 — Prague, Czech Republic

Lanyard Package

EURO 500.00

(limited to 1 package only)

- Company Logo on Lanyards, provided by the network
- Lanyards will be provided in conference bags and on 1to1 tables
- Print advertisement in conference booklet
- Digital advertisement during opening speech and 1to1s
- Newsletter announcements

Conference Bag: EURO 750

- **Company Logo on Conference Bag co-branded with HCL logo**
- **Print Advertisement in Conference booklet**
- **Digital Advertisement during opening speech and 1to1s**
- **Newsletter Announcement.**

Business Update — Allcargo Tanzania

Know Your Network - TANZANIA

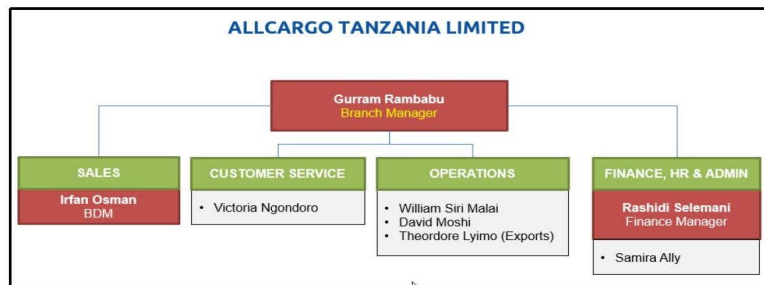
Tanzania has one of the fastest growing economies in East Africa, driven by agriculture, mining, tourism, and trade. The air freight industry is a vital component of the nation's transportation and logistics sector, facilitating the swift movement of goods both domestically and internationally.

In 2024, Tanzanian airports handled approximately 29,800 tonnes of air cargo, underscoring the industry's significant role in the country's trade dynamics.

Tanzania has growing cargo air transport, with key airports like Julius Nyerere International Airport (JNIA) in Dar es Salaam and Kilimanjaro International Airport in Arusha supporting logistics. These facilities are central to connecting Tanzania to global trade networks, supporting various sectors including agriculture, mining, and manufacturing.

While several airlines contribute to Tanzania's air freight services, we at **AllCargo Tanzania** have the expertise, and local connections, to support your network business.

The team is led by [Gurram](#), and have been operating in Dar es Salaam since Nov 2023, slowly growing the business across different products.



Gurram Rambabu



Rashidi Selemani



(L to R) – Irfan, William, Victoria, Theodore, David, Samira

Contact details

Address: FNB House, 4th Floor
Plot No : 1008/1 & 1008/2
Ohio Street, P.O Box : 25304,
Dar-Es-Salaam, Tanzania

Email: infotanzania@allcargologistics.com

Customer Service	Victoria Ngondoro	victoriapn@allcargologistics.com	+255 659309978
Finance Manager	Rashidi Selemani	Rashidi.Selemani@allcargologistics.com	+255 758376571
Branch Manager	Gurram Rambabu	gurram.rambabu@allcargologistics.com	+255 762159775
MD – East Africa	Sanjeev Sukumaran	Sanjeevsukumaran@ecuworldwide.com	+254 790488008

Business Update — CCI Group

CCI Group invests additional ₹640 Crore in a Grade-A Logistics Park in Polivakkam, Chennai

Mumbai, 17th February 2025: CCI Group, India's leading 4PL Integrated Logistics and Supply Chain Company, announces an additional investment of approximately ₹640 crore in the development of a Grade-A logistics park spanning 20 lakh square feet in Phase 2, Polivakkam, Chennai. This follows the company's earlier investment of ₹250 crore in Phase 1, reinforcing its commitment to expanding world-class logistics infrastructure in the region.



(site image of work in Progress)

With this latest investment, CCI Group has now allocated a total of ₹890 crore towards the Polivakkam logistics hub, positioning it as a key player in India's Warehousing and Supply Chain ecosystem.

This expansion is strategically structured into two segments, Phase 2A, a standard requirement facility set to be operational by mid-2025, and Phase 2B, dedicated to built-to-suit (BTS) solutions tailored to industry-specific needs.

With Chennai emerging as a key logistics and supply chain hub in South India, this modern facility will cater to a diverse range of Industries, including E-commerce, Automotive, FMCG, and Manufacturing. Built to global standards, it will feature FM2 flooring for enhanced load-bearing capacity and seamless goods movement, automated shutters, and passive air ventilation ensuring six air changes per hour for improved air quality.

The facility is thoughtfully designed to provide optimal space utilisation, enabling clients to efficiently plan their heavy-load racking systems and high-clearance bays, ensuring operational efficiency across various sectors. While the facility does not include pre-built temperature-controlled zones, they can be customised under the Tenant Improvement Scheme (TIS) to meet specific requirements. Designed for flexibility, the facility will operate on a plug-and-play model, allowing businesses to quickly deploy and scale operations with ease.

As part of CCI Group's commitment to sustainability, the facility will integrate a Sewage Treatment Plant (STP) to treat wastewater, which will be reused for gardening and flushing needs. Additionally, Solar Power systems will be installed as a step towards green energy, reducing reliance on conventional power sources. Built-in skylights will further enhance energy efficiency by maximizing natural lighting.

For enhanced safety, the facility will be integrated with advanced fire protection systems, including hydrants, sprinklers, and fire alarms.

Business Update — CCI Group

Currently, CCI Group is serving over 1,000 clients across diverse industries such as E-commerce, Retail, Chemical, FMCG, Healthcare & Pharma and Automotive. With 48 years of industry expertise, the company has built a strong nationwide presence across 48 cities, managing more than 15 million square feet of owned warehouses and logistics parks. Its operations are driven by a skilled workforce of over 1,000 professionals and a fleet of 1,200+ vehicles. Moreover, CCI has also expanded its footprint globally, operating in over 105 countries, while maintaining a significant presence at more than 20 airports and seaports across India.

With this investment, CCI Group reinforces its commitment to expanding its logistics infrastructure while prioritizing efficiency, sustainability, and future-ready solutions for India's growing supply chain needs. Speaking on the announcement, **Naresh Sharma, Managing Director, CCI Group** said, *"Polivakkam is a key hub in CCI's long-term expansion plans. The region is steadily becoming a logistics hotspot due to its proximity to the Sriperumbudur-Oragadam industrial cluster. By establishing this new facility, CCI Group wants to attract industries reliant on high-quality storage facilities and also strengthen the economy in the region. This expansion not only enhances our logistical capabilities but also underscores our unwavering commitment to provide scalable and flexible solutions to clients that align with global standards."*

About CCI Group:

CCI Group is India's leading 4PL Integrated Logistics and Supply Chain company with a rich legacy of 48 years. The company boasts a pan-India presence across 48 cities, managing over 15 million square feet of owned warehouses and logistics parks, supported by a dynamic workforce of over 1,000 people. CCI has established itself as a prominent player in India's logistics sector and also operates globally, with a network spanning over 105 countries. It also has a significant presence at more than 20 airports and seaports across India.

Serving more than 1000 clients across diverse industries, including E-commerce, Retail, FMCG, Healthcare, Automotive, and more, CCI excels in providing seamless supply chain solutions. The company's operations encompass transportation, last-mile delivery, international freight forwarding, warehousing, and in-plant logistics.

With a fleet of over 1,200 vehicles and a focus on sustainable transport, CCI is committed to innovation, efficiency, and delivering tailored logistics solutions to meet client needs.

Business Update — RIF



***Delivering Excellence
Every time Everywhere***

A Global Freight Partner Committed to Excellence

In the fast-paced world of international logistics, adaptability and reliability are crucial. RIF Group has established itself as a key player in the freight forwarding industry, providing multi-modal solutions across sea, air, road, and rail.

With a network spanning the UK, Europe, and Australia, the company specialises in offering flexible, scalable logistics that meet the ever-changing demands of global trade.



www.rifgroup.co.uk
T: +44 (0) 1932 753799
E: LON@rifworldwide.co.uk

Business Update — RIF



***Delivering Excellence
Every time Everywhere***

A Comprehensive Approach to Freight Forwarding

RIF Group's operations are designed to support efficient, compliant, and cost-effective supply chain solutions. Whether handling full-container load (FCL) or less-than-container load (LCL) shipments, managing customs clearance, or offering specialist warehousing solutions, the company prioritises efficiency and seamless service.

With strategic warehousing facilities in the UK, Europe, and Australia, RIF Group provides value-added services that extend beyond transportation. Their expertise in groupage services, express rail freight, and customs brokerage ensures that clients benefit from an integrated approach to supply chain management.



www.rifgroup.co.uk
T: +44 (0) 1932 753799
E: LON@rifworldwide.co.uk

Business Update — Windlog

Find more about Intermodal



It will be held from April 22 to 24, 2025, from 1 pm to 9 pm in the Anhembi District, in São Paulo/SP. As the most visited logistics event in South America and a leader in presenting innovations, technologies, products, and services for the logistics, intralogistics, technology, cargo transportation, and foreign trade sectors, Intermodal South America attracts the main decision-makers, business leaders, trendsetters, public policy managers, and buyers in a single environment.

With a highly qualified audience, Intermodal is the essential meeting point for businesspeople, professionals, executives, students, and researchers in the logistics area who are looking for solutions, knowledge, and relationships with national and international companies of all sizes.

For three days, the event brings together professionals from +90 countries, providing interaction and business in an environment rich in innovations, technology, varieties of products and services, and end-to-end solutions for the entire logistics chain.

It is impossible for anyone looking to stay up to date with the latest trends, establish commercial contacts and partnerships, discuss important issues for the sustainable development of the entire sector, and, of course, participate in exclusive attractions.

We have participated in the event for 20 years, and this year's edition will offer exciting new features for visitors.

Come to visit us



22 - 24 APRIL 13 - 21h
Distrito Anhembi | São Paulo | BR

street C, booth 20

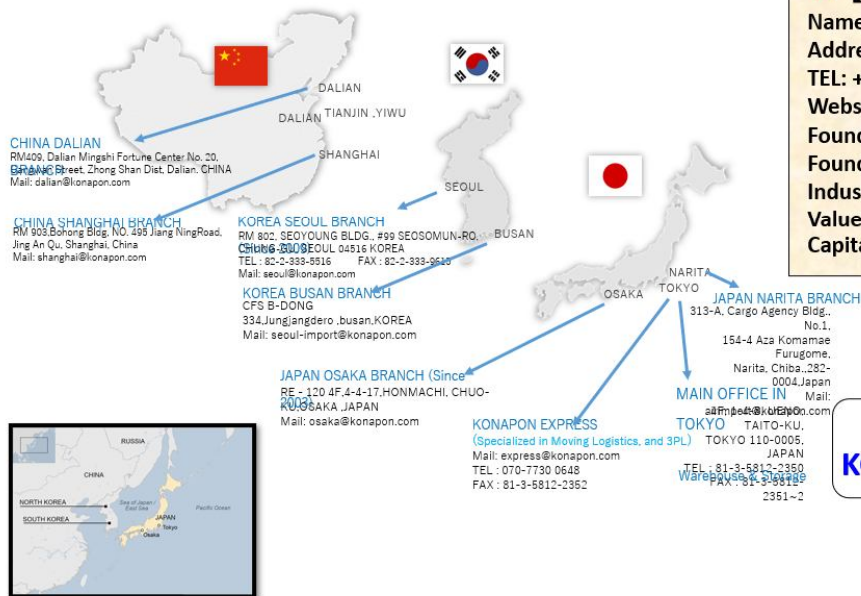
If you have any questions, call us: contato@windlog.com.br | +55 11 5033-7700

Know your Agent—Konapon Corporation, Japan

INTRODUCTION – About Us



【Location and Branch】



【COMPANY PROFILE】

Name: KONAPON CORPORATION
Address: 4F, 1-4-8, UENO, TAITO-KU, TOKYO 110-0005, JAPAN
TEL: +81-3-5812-2350 **FAX:** +81-3-5812-2351
Website: <http://www.konapon.com>
Founder: Mr. Sangwon Choi (President)
Founded: APR1st, 2001
Industry: Forwarder, cargo, trade, customs, logistics.
Values: the needs of our customers and satisfaction.
Capital Fund : JPY 50 million / Japan, KRW 500 million / Korea

KONAPON named from
Korea, china, nippoN



6

Contact



TOKYO HEAD OFFICE

Logistics Division	SURA KIM (General Manager)	surakim@konapon.com
Air Division	MIKYOUNG SEO (Assistant Manager)	air@konapon.com
Ocean Division	YUNJEONG JUNG (Section Chief)	export@konapon.com import@konapon.com
Customs clearance Division	SEUNGJIN CHOI (Section Chief)	knpcus@konapon.com cus@konapon.com
Administration Division	SHIHO MIZUNO (Assistant Manager)	accounting@konapon.com admin-tokyo@konapon.com

GENERAL

KONAPON EXPRESS	SUNHEE LEE (Deputy General Manager)	express@konapon.com
OSAKA BRANCH	AYUMI INADA (Assistant Manager)	osaka@konapon.com
NARITA BRANCH	SANGRARK CHOI	airimport@konapon.com
SEOUL BRANCH	YUMI LEE (Manager)	seoul@konapon.com
DALIAN BRANCH	WEI.LI	dalian@konapon.com
SHANGHAI BRANCH	BONG JEONG	shanghai@konapon.com



35

HCL Network Update — Out going Agent

Dear All,

We would like to announce the below changes in the Network;

Exit :-

⇒ ECU WORLDWIDE (BAHREIN° CO.W.L.L), Bahrein

Change Management for Hyperion ARCS Netting**Overview of the To Be Process**

CNC will share required **SOA format** in which Netting participants will have to share their data (O/s AR+AP at invoice level). On receipt of the SOA from Netting participants, CNC will then upload these SOA a shared file folder where, **EPM** will automatically process the file & then Records will match with counter party books. **NC will share required SOA format in which Netting participants will have to share their data (O/s AR+AP at invoice level). On receipt of the SOA from Netting participants, CNC will then upload these SOA a shared file folder where, EPM will automatically process the file & then Records will match with counter party books.**

Data would be processed as and when data file (SOA template) would be placed in the shared folder for initial upload and changes. Post processing, matching report will be shared

We are currently planning to have 4 pre reporting and 1 final reporting to be executed during One ARCS Hyperion Netting cycle. The number of pre-cycles can be increased or decreased by CNC as and when required.

Basis matching done in **EPM** system, Netting Participants will receive **MATCHED**, **SUGGESTED MATCH** and **UNMATCHED** report at invoice level during all the netting cycles (Pre & Final run)

Basis Pre Reports shared by CNC, Netting Participant can perform their Follow-up with counter parties on their **SUGGESTED MATCH** and **UNMATCHED** transactions, They can add approved AP invoices in **SOA template** & follow-up with counter parties for their unapproved AR invoices as mentioned in unmatched report. For Next Pre-run or Final Run, Netting participants will have to share their Revised **SOA template** CNC and the same will be uploaded in Replace Mode for the participant's complete data. If CNC doesn't receive **Revised** version of your SOA then last received version in that month Netting will be considered for matching.

On Final day of the run, Final Matched Transactions and Final Netting Settlement report will be shared by CNC via e-mail.

Netting Participants will book manual netting vouchers in their ERP as being done earlier, based on the Final Netting Settlement report shared by CNC. Settlement should be done "To / By" CNC as per amount mentioned in Settlement Report & Dates mentioned in Netting Calendar.

Change Management for Hyperion ARCS Netting

HYPERION BENEFITS

- Automated & Transparent Invoice approval process
- Dispute resolution at invoice level
- Proper Audit trail at invoice level for Balance confirmation
- Auto matching/ confirmation & auto Netting Journal booking
- No more holding back of approved invoices

FAQ's

Q1. How would I know if I made a mistake in the manual Excel upload template?

Ans: In Manual Excel SOA Template we have given Instructions on “How to fill Excel SOA” Users can read those Instructions carefully before updating SOA. Also we have develop a macro within SOA template which can validate SOA for all possible human errors and provide error log to users which enable them to correct their mistakes.

Q2. Do I need to control use of any special characters in the manual Excel upload template?

Ans: Yes, You can not use special characters like comma (,) & semi colon (;) anywhere in excel SOA template. Also you should not keep any single cell blank if you have use any invoice line. If there is no information to provide then you can use “NA”

Q3. What if the payable is not booked at all or payable is booked wrongly?

Ans: If any payable invoice is Approved but you have not mentioned in your initial SOA then you can add that invoice in your Revised SOA & share that with CNC in order to match that invoice in next Pre/Final Run. If you have booked any

Receivable or Payable invoice incorrectly then you need to correct that in your ERP system as well as in Revised SOA & share correct data with CNC in order to match those invoices in next Pre/Final Run

Q4. Will “Data Confidentiality” will be maintained during this Netting process?

Ans: Yes, 100% This Hyperion Netting Activity will be carried out by 3rd party vendor & Your Receivable & Payable data will not be shared within Network. In Pre & Final Reporting as well you will receive only those transactions data which is either in your books & in your counterparty books (which related to your office only) Hence Pls. be 100% assure about “Data Confidentiality”

HOLIDAYS around THE WORLD

Country	Date	Holidays
Doha	1st Apr	Eid al-Fitr Holiday
Cyprus	1st Apr	Cyprus National Day
Malaysia	1st Apr	Hari Raya Aidilfitri (2nd Day)
Turkey	1st Apr	Feast of Ramadan
Doha	2nd Apr	Eid al-Fitr Holiday
Malaysia	2nd Apr	Hari Raya Aidilfitri (3rd Day)
Argentina	2nd Apr	Veterans' Day and the Fallen in the Malvinas War
Taiwan	3rd Apr to 6th Apr	Children's Day Holiday
Taiwan	3rd Apr to 6th Apr	Qing Ming Festival
Israel	13th Apr	Passover- office closed
Cambodia	14th Apr - 16th Apr	Khmer New Year
Israel	14th Apr - 17th Apr	Passover –working till 14:00
South Africa, Portugal, Uganda, Cyprus, Canada, Germany, Switzerland, Argentina, Malta, Chile, Australia, Kenya, India	18th Apr	Good Friday
Greece	18th Apr - 21st Apr	Easter
Chile	19th Apr	Holy Saturday
Australia	19th Apr	Holy Saturday (Many regions)
Portugal, Canada, Germany, Italy, Switzerland, Australia	20th Apr	Easter
South Africa	21st Apr	Family Day
Austria, Belgium, Uganda, Cyprus, Canada, Germany, Italy, Switzerland, Netherlands, Australia, Kenya	21st Apr	Easter Monday

HOLIDAYS around THE WORLD

Country	Date	Holidays
Turkey	23rd Apr	National Sovereignty and Children's Day
Portugal	25th Apr	Freedom Day
Italy	25th Apr	Liberation Day
Australia	25th Apr	ANZAC Day
Netherland	26th Apr	King's Day
South Africa	27th Apr	Freedom Day
South Africa	28th Apr	Public holiday Freedom Day observed
Japan	29th Apr	Showa Day
Israel	30th Apr	National Memorial Day – working until 13:00