



INSIDE THIS ISSUE

AGM 2025 — 11 th June (wed) to 14 th June 2025 (sat) Prague, Czech Republic	2 - 3
New Member in HCL Network — Eastrong International Logistics Co.,Ltd China	4
Business Update — Premiere Logistics, China	5 - 6
Business Update — ECU, Chile	7
Business Update — Windlog	8 - 9
ARCS Hyperion Netting Process Walkthrough	10 - 11
Holiday List	12 - 13

HCL AGM 2025 — Prague, Czech Republic

HCL ANNUAL GENERAL MEETING 2025

Dates: 11th June (wed) to 14th June 2025 (sat)

Venue: NH Prague City,
Mozartova 261/1, Praha 15000, Czechia
TEL: 420-257-153111

RSVP: networkadmin@hcllogistics.eu



HCL AGM 2025 — Prague, Czech Republic

OUR SPONSORS

Welcome Party presented by



Pens - Courtesy of



CANADA



Lanyards - Courtesy of



New Member in HCL Network — Eastrong International Logistics Co.,Ltd., China

Eastrong International Logistics Co., Ltd.
上海东志国际货物运输代理有限公司



Eastrong International Logistics Co. Ltd is established in the year of 2002 with headquarters based in Shanghai, China supporting by 250+ employees and 13 own offices across Shanghai, Dalian, Tianjin, Qingdao, Ningbo, Xiamen, Guangzhou, Foshan, Zhongshan, Shenzhen and Hong Kong.

Over the past 23 years, Eastrong Group has highly focused on developing Oceania trade, Transpacific trade and China-Europe trade shipping & logistics business via the following service:

- Air / Ocean / Land / Rail Freight
- Contract Logistics and Warehousing
- DG Cargo
- Project Cargo
- Temperature Controlled Cargo
- Fairs & Exhibitions
- End-to-End E-commerce Logistics Solutions
- Customs Clearance
- Value-added Service



120,000
TEUs



2,000
Tonnes

Our professional service led by a group of expertise management and empowered by the dedicated transport management system (TMS) – Cargo Wise and warehouse management system (WMS) – Manhattan has enabled Eastrong Group being certified for ISO9001, ISO45001 and also IATA CEIV Pharma accordingly.

information for your references:

Stephen Feng

Eastrong Group President

+86 13918187702 / stephen@eastrongintl.com

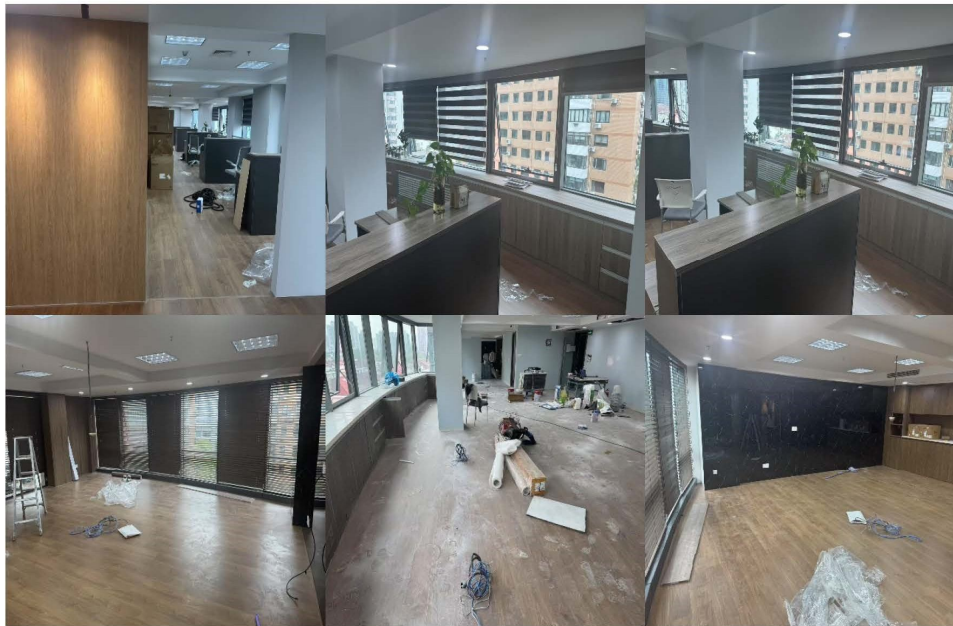
website: https://eastrongintl.com/home_en

HQ address: Unit DEF, 8F, JiuShi Tower, 28 Zhongshan Road(S), Shanghai, 200010, China

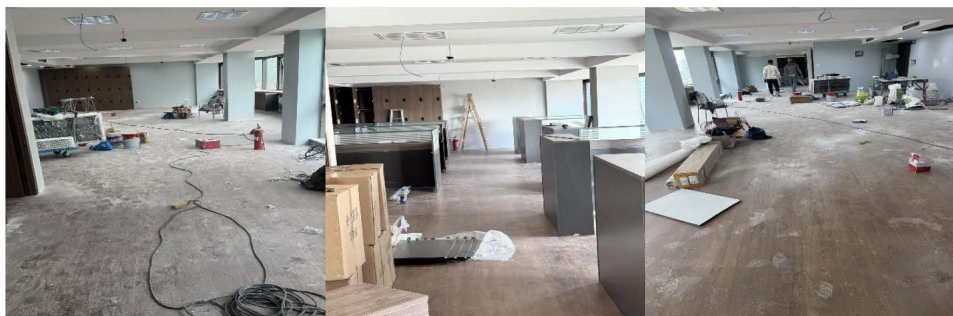
Business Update — Premier Logistics, China

NEWS ABOUT US!

PREMIERE | logistics



After 18 years, our Shanghai office is currently undergoing renovations. As part of this process, we are looking to provide a comfortable and conducive working environment for our staff in Shanghai. This renovation project aims to not only update the physical space but also create a place that feels like a 'home away from home' for our employees in Shanghai. Our goal is to enhance the workspace to boost productivity, collaboration, and overall well-being. We are excited about this transformation and the positive impact it will have on our team in Shanghai.



Business Update — Premier Logistics, China**CONTACT US**

TEL: +86-21-32506989 FAX: +86-21-32506989

E-MAIL: [MARKETING@SHA.PREMIERE- LOGISTICS.COM](mailto:MARKETING@SHA.PREMIERE-LOGISTICS.COM)

WEBSITE: www.premiere-logistics.info

**ADDRESS: RM. 903/904, BUILDING B, NO. 28 XUANHUA RD. CHANGNING DISTRICT,
SHANGHAI, 200050, CHINA**

Business Update — ECU, Chile

GREETINGS FROM CHILE!!!

WE ARE GLAD TO REMIND YOU OUR CONSTANT DEVELOPS AT FCL & AIR PRODUCTS, WITH THE 'SO MUCH MORE THAN YOU CAN EXPECT SERVICES', THAT INCLUDES:

- FCL/AIR IMP & EXP SERVICES
- CUSTOM BROKERS
- PROJECT CARGO
- BREAK BULK
- INLAND SERVICES (NATIONAL & INTERNATIONAL)
- PACKING-REPACKING-LABELING
- STUFFING & DESTUFFING
- COURIER
- AND MUCH MORE!

PLEASE ALWAYS KEEP IN MIND OUR TEAM:

IVAN ALOU – FCL&AIR MANAGER

IVANALOU@ECUWORLDWIDE.COM

ALEJANDRO JARA – FCL&AIR SALES EXECUTIVE

ALEJANDROJARA@ECUWORLDWIDE.COM

MATIAS FUENTES – FCL&AIR CUSTOMER SERVICE

MATIASFUENTES@ECUWORLDWIDE.COM

BENJAMIN RAMIREZ – FCL&AIR OPERATIONS

BENJAMINRAMIREZ@ECUWORLDWIDE.COM



Business Update — Windlog

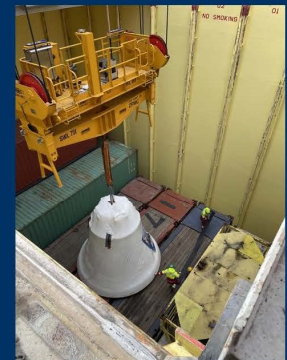
PROJECT CARGO

THE LARGEST BELL
IN THE WORLD

Windlog, a Brazilian company specializing in special cargo logistics, was responsible for transporting the world's largest swinging bell, the Vox Patris, from Poland to Brazil. Weighing 55 tons and measuring 4 meters in height and 4.5 meters in diameter, the bell represented one of the most significant logistical challenges in the company's history.

The operation, carried out in partnership with international freight forwarders, involved a complex global logistics chain. Windlog coordinated every stage of the overland transport, transshipment, and customs clearance at the Baltic Hub port in Gdańsk, Poland.

Highlights:



This project reaffirms expertise in highly complex operations and reinforces our commitment to delivering world-class logistics solutions with global impact.

If you have any questions, call us: contato@windlog.com.br | +55 11 5033-7700

Business Update — Windlog

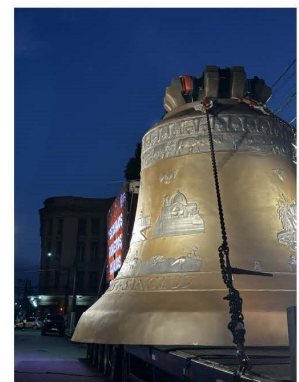


Detailed logistics: from the foundry to its destination

The Vox Patris, cast in southern Poland by the companies Jan Felczyński and Rduch Bells & Clocks, traveled approximately 10,000 kilometers to Brazil. After being carefully packed and hoisted by cranes, the bell and its components — including two smaller bells and structural parts — were transported to the Port of Gdańsk and prepared for maritime shipment as out-of-gauge (OOG) cargo.

The load was secured on three flat racks and two open-top containers, each with a gross weight of up to 22 tons. Special safety measures ensured the stability of the cargo throughout the journey, which included a transshipment in Hamburg, Germany, before continuing to the Port of Santos, where it arrived on May 17, 2025.

The final leg of the journey — over 1,600 kilometers by road to the city of Trindade, in the state of Goiás — will be entirely managed by Windlog and is scheduled to begin on May 24 and conclude by June 1.



A historic and spiritual milestone

The Vox Patris, whose name in Latin means “Voice of the Father,” will be installed atop a 100-meter tower at the Sanctuary of the Divine Eternal Father, where the world’s largest cathedral is currently under construction, with a capacity for 12,000 worshippers. The sanctuary already welcomes over 4 million pilgrims annually.

Change Management for Hyperion ARCS Netting**Overview of the To Be Process**

CNC will share required **SOA format** in which Netting participants will have to share their data (O/s AR+AP at invoice level). On receipt of the SOA from Netting participants, CNC will then upload these SOA a shared file folder where, **EPM** will automatically process the file & then Records will match with counter party books. **NC will share required SOA format in which Netting participants will have to share their data (O/s AR+AP at invoice level). On receipt of the SOA from Netting participants, CNC will then upload these SOA a shared file folder where, EPM will automatically process the file & then Records will match with counter party books.**

Data would be processed as and when data file (SOA template) would be placed in the shared folder for initial upload and changes. Post processing, matching report will be shared

We are currently planning to have 4 pre reporting and 1 final reporting to be executed during One ARCS Hyperion Netting cycle. The number of pre-cycles can be increased or decreased by CNC as and when required.

Basis matching done in **EPM** system, Netting Participants will receive **MATCHED**, **SUGGESTED MATCH** and **UNMATCHED** report at invoice level during all the netting cycles (Pre & Final run)

Basis Pre Reports shared by CNC, Netting Participant can perform their Follow-up with counter parties on their **SUGGESTED MATCH** and **UNMATCHED** transactions, They can add approved AP invoices in **SOA template** & follow-up with counter parties for their unapproved AR invoices as mentioned in unmatched report. For Next Pre-run or Final Run, Netting participants will have to share their Revised **SOA template** CNC and the same will be uploaded in Replace Mode for the participant's complete data. If CNC doesn't receive **Revised** version of your SOA then last received version in that month Netting will be considered for matching.

On Final day of the run, Final Matched Transactions and Final Netting Settlement report will be shared by CNC via e-mail.

Netting Participants will book manual netting vouchers in their ERP as being done earlier, based on the Final Netting Settlement report shared by CNC. Settlement should be done "To / By" CNC as per amount mentioned in Settlement Report & Dates mentioned in Netting Calendar.

Change Management for Hyperion ARCS Netting

HYPERION BENEFITS

- Automated & Transparent Invoice approval process
- Dispute resolution at invoice level
- Proper Audit trail at invoice level for Balance confirmation
- Auto matching/ confirmation & auto Netting Journal booking
- No more holding back of approved invoices

FAQ's

Q1. How would I know if I made a mistake in the manual Excel upload template?

Ans: In Manual Excel SOA Template we have given Instructions on “How to fill Excel SOA” Users can read those Instructions carefully before updating SOA. Also we have develop a macro within SOA template which can validate SOA for all possible human errors and provide error log to users which enable them to correct their mistakes.

Q2. Do I need to control use of any special characters in the manual Excel upload template?

Ans: Yes, You can not use special characters like comma (,) & semi colon (;) anywhere in excel SOA template. Also you should not keep any single cell blank if you have use any invoice line. If there is no information to provide then you can use “NA”

Q3. What if the payable is not booked at all or payable is booked wrongly?

Ans: If any payable invoice is Approved but you have not mentioned in your initial SOA then you can add that invoice in your Revised SOA & share that with CNC in order to match that invoice in next Pre/Final Run. If you have booked any

Receivable or Payable invoice incorrectly then you need to correct that in your ERP system as well as in Revised SOA & share correct data with CNC in order to match those invoices in next Pre/Final Run

Q4. Will “Data Confidentiality” will be maintained during this Netting process?

Ans: Yes, 100% This Hyperion Netting Activity will be carried out by 3rd party vendor & Your Receivable & Payable data will not be shared within Network. In Pre & Final Reporting as well you will receive only those transactions data which is either in your books & in your counterparty books (which related to your office only) Hence Pls. be 100% assure about “Data Confidentiality”

HOLIDAYS around THE WORLD

Country	Date	Holidays
Israel	1st June	Shavuot eve-working till 12:00
Malaysia	2nd Jun	Birthday of SPB Yang di-Pertuan Agong
Israel	2nd June	shavuot-office closed
Italy	2nd June	Italian Republic Holiday
Kenya	2nd June	Madaraka day
Uganda	3rd June	Uganda Martyr's Day
Maldives	5th June	Hajj Day
Turkey	5th June	Feast of Sacrifice - Eve
Korea	6th June	Memorial day
Maldives	6th June	Eid-UI-Al'haa
Turkey	6th June	Feast of Sacrifice
Uganda	7th June	Eid al- Adha
Malaysia	7th June	Hari Raya Qurban *
Turkey	7th June	Feast of Sacrifice
Malta	7th June	Sette Giugno

HOLIDAYS around THE WORLD

Country	Date	Holidays
Doha	8th June	Eid al-Adha
Germany	8th June	Whit Sunday
Turkey	8th June	Feast of Sacrifice
Netherland	8th June	Pentecost (Whit Sunday)
Doha	9th June	Eid al-Adha Holiday
Belgium	9th June	Whit Monday
Uganda	9th June	National Heroes Day
Austria, Belgium, Cyprus, Germany, Netherlands, Switzerland	9th June	Pentecost (Whit Monday)
Turkey	9th June	Feast of Sacrifice
Australia	9th June	King's Birthday (Many regions)
Portugal	10th June	Portugal Day
Doha	10th June	Eid al-Adha Holiday
South Africa	16th June	Youth Day
Argentina	16th June	Passing into Immortality of General Martín Güemes
Cambodia	18th June	Queen Monineadh's birthday
Austria	19th June	Corpus Christi
Portugal	19th June	Body of God
Germany	19th June	Feast of Corpus Christi
Argentina	20th June	Passing into Immortality of General Manuel Belgrano
Maldives	26th Jun	Islamic New year
Malta, Chile	29th June	Feast of St Peter and St Paul