



IN THIS ISSUE

Farewell Message —BLG International Forwarding GmbH & Co. KG ,Germany	2
Exit Announcement - BLG International Forwarding GmbH & Co. KG ,Germany	3
Service Update —M&M air sea cargo GmbH,Germany	4
Business update: DSH Global Logistics Australia	5
Business update: Oshfir Customs and Forwarding Agency	6
Business Update—Green Dragon, Vietnam	7
Business Update—Premiere Logistics, China	8-9
Service Update—Avvashya CCI Logistics Private Limited	10-11
Service Highlight—ECU-WORLDWIDE (SINGAPORE) PTE. LTD.	12-13
Netting Calendar	14
Holiday List	15-16

Farewell Message —BLG International Forwarding GmbH & Co. KG ,Germany

Dear Network Partners & Friends,

For me, it is time to say: "Bye for now"!

As you know, with effect from April 1, 2021, Rhenus Freight Logistics GmbH & Co. KG, Germany has undertaken the forwarding business of BLG International Forwarding GmbH & Co KG, Germany.

BLG International Forwarding (and before its predecessor, fortra Group: logfortra & infortra GmbH) had been an active member of the HCL / ECU Air Network for more than 15 years. Our actual membership contract was still in effect until August 31, 2021. Both sides decided amicably not to renew this membership after August 31.

I would like to take this opportunity to say thank you and so long to all of you! My humble self has been the main contact person/window in Germany for the HCL / Ecu Air Network since the very first days of our membership.

Over the years, besides of always being long-term reliable business partners, many of you became close friends. For us, being part of the Network felt almost like being part of a huge international family. I know most of our members since many years, many of you for more than 10 or even 15 years now!

Our conferences and several one-to-one appointments around the world gave me the opportunity to get to know many of you even face-to-face. We share unforgettable moments, memories, experiences, and anecdotes. Especially from our memorable international network conferences! As fortra respectively BLG Germany, we did not miss one single of these HCL Air conferences!

As you know, in general speaking the world is small. And the world of the forwarding industry is even smaller! Therefore, I am convinced that with many of you, our paths will cross again.

For those of you who would like to keep in touch with me on a personal level, you can always find me on the social networks like Facebook, Instagram, LinkedIn, Xing, under my full name, Marco Jimenez Leffler.

Thanks again for the professional business cooperation and the unforgettable moments during all these years.

Stay safe and healthy and I wish you all the best!

I remain with kind personal regards

Marco Jimenez Leffler
Partner Network Manager

Rhenus Freight Logistics GmbH & Co. KG,
Formerly: BLG International Forwarding GmbH &
Co. KG



Exit Announcement - BLG International Forwarding GmbH & Co. KG ,Germany



Dear All

As informed earlier, with effect from April 1, 2021, the forwarding business of BLG International Forwarding GmbH & Co KG, Germany has been taken over by Rhenus Freight Logistics GmbH & Co. KG, Germany.

BLG International Forwarding had been an active member of the HCL Network for more than 15 years. Their membership is valid till August 31, 2021. Both sides have decided amicably not to renew this membership.

We wish Marco all the very best for his future endeavors. Here are some memorable moments spent with him in last few years.



Service Update —M&M air sea cargo GmbH,Germany



PROJECT LOGISTICS SEA FREIGHT

Dear Members,

You are part of the project cargo industry and in search of an efficient and reliable logistics partner? Opt for our M&M Project Logistics Sea Freight services.

With long-time expertise, in-depth market knowledge and the entire product portfolio and fully flexible solutions adapted to your needs, we want to become your competent and specialized project logistics partner.

OUR SERVICES

- » Engineering, preparation and handling
- » Calculation of bridge capacities etc.
- » Traffic re-routing measures
- » Pre-carriage by road, rail and waterway
- » Lifting, lashing and securing
- » Port handling
- » Worldwide ocean transportation, bulk or containerized, by conventional liner vessels, roll-on roll-off, heavy lift carriers
- » Full and partial charter
- » Customs clearance & documentation
- » Transport insurance, etc.
- » On-forwarding to final destination

YOUR ADVANTAGES

- » Complete management from one source reduces costs and complexity to a minimum
- » Full project supervision to safeguard your interests - if required, up to final construction site
- » Technical experts understand the requirements of your cargo and develop (creative) solutions
- » Experienced and passionate project experts ensure smooth shipment progress at any time

Contact your M&M Project Manager for more information

M&M air sea cargo GmbH

Contact: **Mr. Marco Fischer**
Operations Operations Manager Sea Freight & Project Logistics

Email: marco.fischer@mumnet.com
Phone: +49 (211) 43 71 86-41
Fax : +49 (172) 818 0 792



**Business update: DSH Global Logistics
Australia**



Dear Agents,

We wish to advise that due to the current lock down in Sydney, there are major delays at airports, sea ports and unpack depots.

With less staff working at airport/ports and depots, goods are taking longer to become available for delivery.

We understand this is frustrating, and shipments are already urgent from being delayed in transit.

We will endeavour to expedite delivery as soon as possible, but as you can appreciate these circumstances are beyond our control.

Kind Regards,
The Team at DSH Global Logistics

Business update: Oshfir Customs and Forwarding Agency

Hello from Israel!

Dear Colleagues,

The coronavirus pandemic has posed unprecedented challenges globally and has had a significant impact on the international air transport sector.

As a result of the outbreak of the coronavirus, many changes have been made in operating processes at Ben-Gurion International Airport.

In 2020 the services provided to cargos at Ben-Gurion International Airport have been significantly reduced due to COVID-19 restrictions, also due to reduction of passenger flights.

At the same period of time, the air freight rates have risen substantially and, unfortunately, are still at quite high levels. These dramatic travel restrictions and rate increase influenced of course to an Israeli market and also had severely limited volume of import and export of air cargos.

Oshfir has air service to Israel and from Israel. We have an office in Natbag airport, which allow to proceed with customs clearance and issuing all necessary documentation quickly.

We are currently experiencing an increasingly challenging situation.

All rates are given on case by case basic and valid maximum for 1 week or even less.

We also do our best to match our client's demands, however high air rates impact to decrease of our air traffic and also decrease number of air freight nominations from our agents Worldwide and also HCL agent.

AIR cargo capacity remained relatively stable during March, April and May 2021. However, it is too early to do any prognosis even for the near future.

Having an optimistic approach, we believe that improve of situation with COVID-19 will lead also to more stable services and cheap air freight rates and will open more options for delivery of airfreight cargos to different destinations.

Please do not hesitate to contact us for your quotation requests, new air nominations or any further queries, which you may have.

Wishing all of you to stay healthy and keep safe.

Regards

Team OSHFIR CUSTOMS & FORWARDING AGENCY – IMPORT & EXPORT LTD

Business Update—Green Dragon, Vietnam

GREEN DRAGON CALLED ON FOR FOOD DELIVERY AHEAD OF LOCKDOWN - AUG 2021

Dear HCL Partners and Friends,

Ho Chi Minh City has had strict coronavirus measures in place since June, including banning gatherings of more than two people in public and only allowing people to leave home for essential matters like buying food or going to work in certain permitted businesses. Under the new measures, people in high-risk areas cannot leave home at all.

Vietnam's government said it is sending troops to Ho Chi Minh City to help deliver food and aid to households as it further tightens restrictions on people's movements amid a worsening surge of the coronavirus.

The army personnel, together with many logistics companies like "GREEN DRAGON INTERNATIONAL LOGISTICS CORPORATION", will be deployed to help with logistics as the city of 10 million people asks residents to "stay put" for two weeks

We have had all of our drivers and staff vaccinated already so that we have full manpower to deliver the best services to our agents and customers during a pandemic.

If there's any way we can help support you, especially goods imported into Vietnam (and vice versa), please don't hesitate to reach out at OVERSEA.AGENT@GREENDRAGONLOG.COM.VN

Air cargo from China to North America hectic, facing capacity shortages and delays

Demand for Air freight capacity from China to North America is rising as the global economy continues to recover from the coronavirus pandemic. However, while major logistics providers launch new routes to deliver made-in-China products, due to the limited transport capacity, which will push up rates, there may be capacity shortages in the coming peak season.

FedEx on Monday announced through the Global Times the launch of four new intercontinental flights starting from China, offering Asia-Pacific businesses additional capacity of almost 1,400 tons every week, and enhanced service to major cities in North America, Asia and Europe. Following the launch of a new flight between Beijing and Anchorage, Alaska, FedEx has added three other flights connecting Guangzhou, South China's Guangdong Province, to North America and Europe. Senior vice president and president FedEx China, Eddy Chan said that "China continues its momentum in facilitating global economic recovery. The new flights not only increase the competitiveness of Chinese companies, but also propel international exports from this region. And added connectivity will play a key role in the resumption of business activities on a regional and global level."

According to data from the General Administration of Customs, in the first half of the year, China's total trade surged 27.1 percent year-on-year to reach 18.07 trillion yuan (\$2.8 trillion), with imports increasing 25.9 percent year-on-year and exports growing 28.1 percent. China, as the world's manufacturing factory, has been churning out goods to keep the machines in plants running and supermarket shelves full all over the world.

A source close to one of the China's major airlines told the Global Times that "robust exports pushed up demand for global cargo services, and also reflected the world's need for Chinese-made products. Even if the Delta variant brought about COVID-19 flare-up in South China's Guangdong briefly, it did not have a huge impact on local factories."

This source's forecast on the peak season (which runs from October to December) may see freight capacity shortage, also warned, as global transport capacity remains limited when work and operations in many other countries have not returned to normalcy.

Another logistics giant, SF International, told the Global Times that the hottest routes at present are from East China and South China to North America, and they usually require booking one week in advance. SF International added, "recently, the rate for cargo from China to the US increased by 5 yuan per kilogram, but rates on routes from China to Europe and Southeast Asia did not change."

An employee of a freight agency based in South China's Guangzhou (the agency's main destination is India, and it usually carries about eight standard containers by air and 15-20 by sea each month) told to Global Times, said that both air and sea transport have been hot since the coronavirus outbreak, which have driven up transport costs by more than 30 percent last year compared with the preCOVID level.

Freight agencies have already warned of pending delays. A cross-border transport agent in Wuxi, East China's Jiangsu Province, said that it could not ensure the efficiency of air transport from Beijing to the US.

The agent mentioned, "There will be delays. Cargo usually passes through US customs at least eight working days after declaration. Within China, the latest COVID-19 outbreaks will make export declarations more complicated, and there could be more delays at airports."

Cargo airlines cancel hundreds of China flights amid COVID outbreak

Chinese restrictions to control a spike in COVID infections have severely curtailed cargo operations at several airports and reduced crew availability, forcing airlines to cancel hundreds of flights as the peak shipping season kicks into high gear in a sector already struggling to keep up with high demand. Some logistics professionals say the growing scarcity of long-haul aircraft could push freight rates near \$20 per kilogram on certain trade lanes within a few weeks, making air transport five or six times more expensive than normal for the fall rush.

According to the data from logistics providers and risk intelligence analysts, 531 flights, 43% of the daily total, were cancelled from Beijing and that airlines scrubbed 408 flights, a third of the daily total, at Shanghai Pudong International Airport, as of Aug. 6. Two-thirds of the flights were cancelled in Xiamen, and Sunan Shuofang International Airport, which serves the cities of Wuxi and Suzhou in southern Jiangsu province, is not accepting import cargo.

The mass cancellation of cargo flights in China is the latest in a series of supply chain disruptions this year that include a large container ship getting stuck in the Suez Canal for six days, a partial COVID lockdown of the Yantian terminal in the Port of Shenzhen for nearly a month and spun off shipping delays around the world, and wildfires in British Columbia that halted intermodal rail traffic to and from the Port of Vancouver.

China recently recorded its highest number of COVID cases since the start of the outbreak in Wuhan last year as the delta variant starts to take hold. The outbreak has been traced to nine airport cleaners at Nanjing Lukou International Airport who tested positive during a routine test last month. Lockdowns, quarantine measures and travel restrictions have disrupted manufacturing and logistics operations.

In the air cargo environment, the public health measures have had a dual impact: reducing the supply of labor to handle cargo at airports and to fly aircraft. Each airport has instituted different approaches to combating COVID. At Shanghai Pudong airport, employees work for seven days, quarantine in a government hotel for seven days and then quarantine at home for seven days, before starting the cycle over again.

That has put more than half the workforce out of action, limiting the ability to consolidate and break down cargo, and load and unload planes. The extra time on the ramp puts all-cargo airlines in a jam because pilots are running up against fatigue rules limiting the permissible amount of on-duty time. Airlines are changing crews in Tokyo and Seoul, South Korea, to avoid aggressive Chinese requirements that pilots quarantine for 14 days if they leave the airport for rest, which would quickly reduce the pilot pool and the number of flights they could operate.

China Eastern Airlines has suspended passenger freighters, used for dedicated cargo customers during the hiatus in air travel, until September, it said in a notice. China Southern also suspended auxiliary freighters to the U.S. through August and cancelled 25% of its European and U.S. freighter flights, according to a market update from Hong Kong-based Hippo Logistics. Other passenger and cargo airlines also have canceled flights.

Some logistics experts expect the rates are likely to skyrocket because the service cutbacks are hitting at the same time demand to move seasonal holiday goods increases and many businesses turn to air because of massive backlogs in ocean shipping. Jones Shah said spot rates for air cargo from China to the U.S. and Europe have jumped 10% in the past few days. Several purchasers of freight transportation said prices are likely to quickly move beyond \$10 per kilogram, depending on the destination, from the traditional peak season range of \$3.30 to \$4.

Director of airfreight at United World Line, James Constantinidis said that "I would not be surprised if we see rates climb past \$13/kilogram, possibly even hit \$20/kg, if demand does not decline" UWL officials said they have postponed a planned announcement of direct airfreight service from Shanghai to Chicago O'Hare airport via a block space agreement with an airline because of the uncertainty surrounding COVID-related flight cancellations

**Service Update—Avvashya CCI Logistics
Private Limited**



Market Potential – Bangalore (India)

Bangalore / Karnataka has potential market of IT & Hardware , Aerospace, Automotive, Healthcare , Garments Etc.

Value Added Service:

ACCI Bangalore has provided value added services like palletisation based on supplier / consignee requirements, recently we have successfully completed and moved 36 palletisation (6Ton), transportation and export of 6 Ton Air cargo for Dhaka metro Project.

Aerospace Industry

ACCI Bangalore have successfully handled Air Import & Export of AOG (Aircraft on Ground) service , import of Dry ICE cargo for Tata advance systems.

Pharma & Healthcare Industry

ACCI Bangalore have moved DG - Dangerous Goods & Temperature controlled Air cargo.

**Service Update—Avvashya CCI Logistics
Private Limited**



FREIGHT FORWARDING

- Extensive pan-India and global network, and expertise in handling cargo movements
- Seasoned professionals adept to manage any kind of complexity in transit and tackle it in record time
- Relationship with core carriers and a network spanning across 160+ countries

CUSTOMS CLEARANCE

- Smooth and faster clearance, while painstakingly adhering to government regulations
- Expertise in different aspects of custom clearance
- Professional, cutting-edge services across the length and breadth of the country

Talk to the specialists to simplify your supply chain:

Call us at +91 9739048290 (Mr.Chandrakanth Tokare – Branch Manager) or write to us at newworksales@avvashyacci.com

**Service Highlight—ECU-WORLDWIDE
(SINGAPORE) PTE. LTD.**



Singapore Air team has executed Air import in Singapore for a prestigious and selective client

Weight : 5.5 Ton

DIMS: 1*420x155x225 cm + 1*250x150x215 cm + 1*325x50x70 cm+ 1*340x150x75 cm

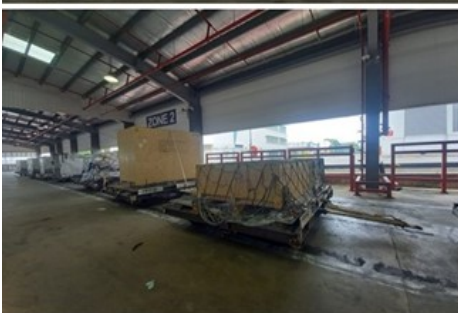
Commodity: Armoured Vehicle Launched Bridge(Crated)

Airline- Cargolux (CV)

Lead time: 2 days (Door to Door)

Shipment execution process and Challenges and complexities overcome by SG team

- Before shipment is loaded on aircraft, we gathered the End User Certificate and License to deal in Arms Explosives from customer and send to CV for approval with Singapore Police Force.
- Once approval was accepted, CV booked and standby the booking details.
- We liaised closely with consignee for their inbound permit and also checking on flight arrival for the complete shipment to be on board.
- Once shipment arrived in Singapore, we arranged Escort from Aircraft to the Strong room. Our clearance team had to be on standby as shipment did not require escort from terminal to consignee door, since shipment is crated and not export to “public eyes”.
- Upon receipt of the photos from SATS, our clearance team had custom clear and delivered the shipment accordingly to the consignee.



**Service Highlight—ECU-WORLDWIDE
(SINGAPORE) PTE. LTD.**



Singapore Air team has executed Export Ex SIN Air shipment, Consignee in Shanghai- Silicon Technology Company in China.

Weight 20 Tons
Commodity: Semi-Conductor equipment (Crated)
Airline- Singapore Airline (SQ)
Lead time: 2 days (Door to Door)

Shipment execution process and Challenges and complexities overcome by SG team.

- Based on Packing List received from shipper, team cumulated cargo details and calculated to secure rates and space.
- Shipper had arranged ECU SIN team to book Air Ride truck for collection of shipment aside from the normal truck.
- Air Ride truck arrived at the shipper’s premises on time and started loading shipment to transfer to Free Trade Zone, which has to be follow up closely.
- Once Air Ride truck arrived at Free trade zone, our export operations had to be on standby at terminal to offload the shipment and transfer it to SATS terminal.
- The shipment went in “One Go” and customer was very pleased with our service and provided us additional business within a short span of time.



Netting Update



THE AVVASHYA GROUP

August Netting Calendar

2021	AIR NETTING CALENDAR						
MONTH	CNC SEND OUT	CNC SEND OUT	CNC SEND OUT	LAST DAY	FINAL DAY!	PAYMENTS FROM	SETTLEMENT
	FIRST PRE REPORT	2ND PRE REPORT	3RD PRE REPORT	PRE REPORTS	FINAL REPORTS WILL BE	PARTICIPANTS HAVE	PAY OUT DAY
				CAN BE SENT TO CNC	SENT BY CNC	TO BE WITH CNC	BY CNC
	Tuesday	Wednesday	Thursday	Friday	Monday	Tuesday	Tuesday
SEPTEMBER	21	22	23	24	27	28	05-Oct

HOLIDAYS IN THE WORLD

Sr. No.	Country	Date	Occasion
1	Vietnam	2-5 Sep	Independence Day
2	Canada/USA/Puerto Rico	06-Sep-21	Labour Day
3	Israel	06-Sep-21	Jewish New Year Eve, working till 12:00
4	Brazil	07-Sep-21	Independence Day
5	Israel	7+8 Sep	New Year
6	India	10-Sep-21	Ganesh Chaturthi
7	Mauritius	11-Sep-21	Ganesh Chaturthi
8	Spain (BCN)	11-Sep-21	National Day of Catalonia
9	El Salvador/Guatemala	15-Sep-21	Independence Day
10	Israel	15-Sep-21	Kipur Eve, working till 11:00
11	Israel	16-Sep-21	Yom Kipur
12	Mexico	16-Sep-21	Independence Day
13	Taiwan	18-21 Sep	Mid-Autumn Festival
14	Chile	18-Sep-21	Independence Day

www.hcllogistics.net



 THE AVVASHYA GROUP

HOLIDAYS IN THE WORLD

Sr. No.	Country	Date	Occasion
15	Chile	19-Sep-21	Day of the Glories of the Army
16	Rep. of China	19-21 Sep	Mid-Autumn Festival
17	Sri Lanka	20-Sep-21	Binara Full Moon Poya Day
18	Israel	20-Sep-21	Sukkot Eve, working till 12:00
19	Israel	21-Sep-21	Sukkot
20	Israel	22-26 Sep	Sukkot week, working till 14:00
21	Korea	20-22 Sep	Chusok (Korean Thanksgiving Day)
22	Hong Kong	22-Sep-21	The day following the Chinese Mid-Autumn Festival
23	Cambodia	24-Sep-21	Constitution Day
24	Spain (BCN)	24-Sep-21	Virgin of Mercy
25	S. Africa	24-Sep-21	Heritage Day
26	Israel	27-Sep-21	Simchat Tora Eve, working till 12:00
27	Israel	28-Sep-21	Simchat Tora
28	Czech Rep.	28-Sep-21	St. Wenceslas Day

www.hcllogistics.net



 THE AVVASHYA GROUP