

INSIDE THIS ISSUE

Business Update— ASIAPAC TURKEY	3
Business Update— ECU WORLDWIDE (CYPRUS)	4 - 6
Business Update— DSH Global	7
Business Update— M & M	8 - 11
Business Update— RIF Group	12
Business Update— Premiere	13 - 14
Network Announcement	15
ARCS Hyperion Netting Process Walkthrough	16 - 17
Holiday List	18

Team HCL Wishes You and Your Family all the hope, wonder, and joy that the season can bring.

A wonderful New Year!!



Business Update— ASIAPAC TURKEY

We are thrilled to share the fantastic news that Asiapac Turkey has been recognized for excellence in Freight Transportation and Logistics Services by the prestigious organization; Exporter's Association (Hizmet İhracatçıları Birliği)

Out of the companies participating in the 2022 Service Export Champions evaluation, we have achieved an outstanding 12th position in our category.

This accomplishment reflects our unwavering commitment to delivering top-tier services and underscores the dedication and expertise of each member of our team. It is a testament to our collective efforts and the high standards we uphold at Asiapac Turkey.



Business Update— ECU WORLDWIDE (CYPRUS)

To view the detailed presentation click on the Link [⇒ ECU \(Cyprus\) Presentation 2023](#)

(in case, if you are unable to open the link, the presentation is attached with the email)



CYPRUS OVERVIEW

	<p>Capital – Nicosia</p> <p>Main Cities – Nicosia, Limassol, Larnaca, Paphos</p> <p>Major ports – Limassol</p>
	<p>Currency – Euro</p> <p>Per capita Income – \$40,380</p>
	<p>Population – 1.4 Million</p> <p>Average Age – 38.5 Years</p>
	<p>Neighbouring Countries – Turkey & Greece</p> <p>Languages – English, Greek & Turkish</p> <p>Key Trading partners – EU, UK, Greece & MEA</p>
	<p>Products – LCL, FCL & Air Freight</p> <p>USP – Own office providing easy access to Asia & Europe with direct import & export sailings</p>



SOLUTIONS DESIGNED FOR YOUR BUSINESS NEEDS

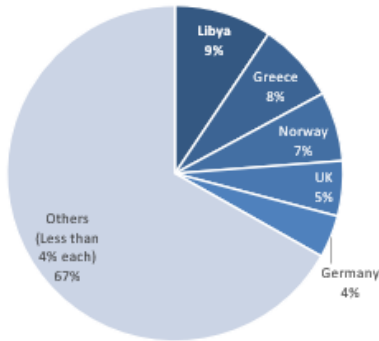
	Import LCL Deconsolidation		Gateway Services		Trucking / Drayage
	Export LCL Consolidation		Dangerous Goods Handling		Door to door deliveries
	Export FCL and Import FCL		Container Freight Station		Warehousing
	Air Freight		Multimodal Transport Operation		Palletizing, Crating and packaging

Business Update— ECU WORLDWIDE (CYPRUS)



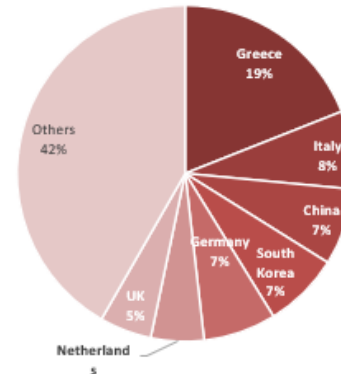
Trade Partners & Commodities

Exports



Key Exported Products: Perishable, Pharmaceuticals, Cement, Clothing, Minerals
Key Exporting Partners: Libya, EU, UK, Greece, Israel & US

Imports



Key Imported Products: Machinery, Petroleum & Lubricants, Machinery & transport equipment
Key Exporting Partners: Greece, EU, UK, Middle East, North Africa

Direct LCL Tradelanes



Export | POL : Limassol

Outbound LCL service is performed through a fortnightly consolidation service from Limassol via Antwerp, to worldwide destinations.

Destination Country	Port Of Destination	Frequency	Transit Time
BELGIUM	Antwerp	Fortnightly	18 days

Import | POD : Limassol

Inbound LCL service is performed through direct consolidation services from several worldwide origins to Limassol

Loading Country	Loading Port	Frequency	Transit Time
BELGIUM	Antwerp	Weekly	12 days
GERMANY	Hamburg	Weekly	12 – 14 days
GREECE	Piraeus	Weekly	2 days
SINGAPORE	Singapore	Fortnightly	21 days
SPAIN	Barcelona	Weekly	7 days
ITALY	Ravenna	Weekly	7 days
UAE	Jebel Ali	Fortnightly	15 days
UK	Southampton	Fortnightly	15 days

Business Update— ECU WORLDWIDE (CYPRUS)

ONE INTEGRATED PLATFORM FOR ALL YOUR SHIPPING NEEDS

ECU360

SHIP WITH A CLICK

RELIABLE | SCALABLE | SECURE



24x7 instant quotes for LCL shipments



Fast and convenient online bookings



Real-time sailing schedule



Easy cargo tracking



Reusable personalised dashboards



Online submission of shipping instructions



Business analytics and insights



Door-to-door booking in 50 countries



API and EDI Integration with shipping lines and customers

WE'VE GOT CYPRUS COVERED FOR YOU!



We look forward to your interest!

ECU Worldwide (Cyprus) Ltd.

Corner Omonias and Aeginis no 1
Psilos Court, 3rd floor, Limassol 3052
P.O.Box 56027, Cyprus

Phone : +357 25 560292
Fax : +357 25 560350
Email : InfoCyprus@ecuworldwide.com

Reach out for Business

Michael Antoniadis	Operations Manager	MichaelAntoniades@ecuworldwide.com
George Antoniadis	Managing Director	GeorgeAntoniades@ecuworldwide.com

Business Update—DSH Global



Engineered Stone Ban

Australia is the first country to announce a ban on engineered stone from July 1st, 2024.

Australian Federal Government has agreed to ban the importation, manufacturing and use of the product, which is commonly used to make kitchen and bathroom benchtops.

The popular material can cause the lung disease silicosis through exposure to crystalline dust when cut.

We will provide additional information as the commencement draws nearer.

Please feel free to contact us should you require anything further



Copyright (C) 2023 DSH Global Logistics. All rights reserved.
You are receiving this email because you opted in via our website.

Our mailing address is:
DSH Global Logistics
3 Arab Road, Padstow
Sydney, NSW 2211
Australia

Business Update— M & M, Germany

Aircraft engine on board

Frankfurt. The chargeable cargo weight: 4.8 tons, the dimensions 580 x 201 x 250 cm, the value: USD 7.8 million – a Pratt & Whitney aircraft engine just arrived at Frankfurt Hahn Airport for repair work to be done. The transport of the valuable and over-dimensioned cargo aircraft engine from Pittsburgh, Pennsylvania, to Frankfurt Airport and back, which the Miltzer & Münch Aviation Logistics Division is handling at this time, is another special order for the experienced team.

Engines are a separate and highly specific branch in the field of Aviation Logistics; not every forwarder can handle them, due to the dimensions, the sensitivity and the high value of the goods, and customs clearance for temporary import/re-export is a complex field, too. The Miltzer & Münch air sea cargo Aviation Logistics team is however familiar with this special service; M&M Germany has already had engines in import and export at the Hamburg, Berlin and Frankfurt branch offices.

The engine – a BS1290 PW814 GA – is to be repaired at MTU Maintenance Berlin-Brandenburg and will go back to the US. The M&M team arranges the transport to MTU in Ludwigsfelde, a 530-kilometer distance; the valuable freight is transported on a flat bed and under strict security.

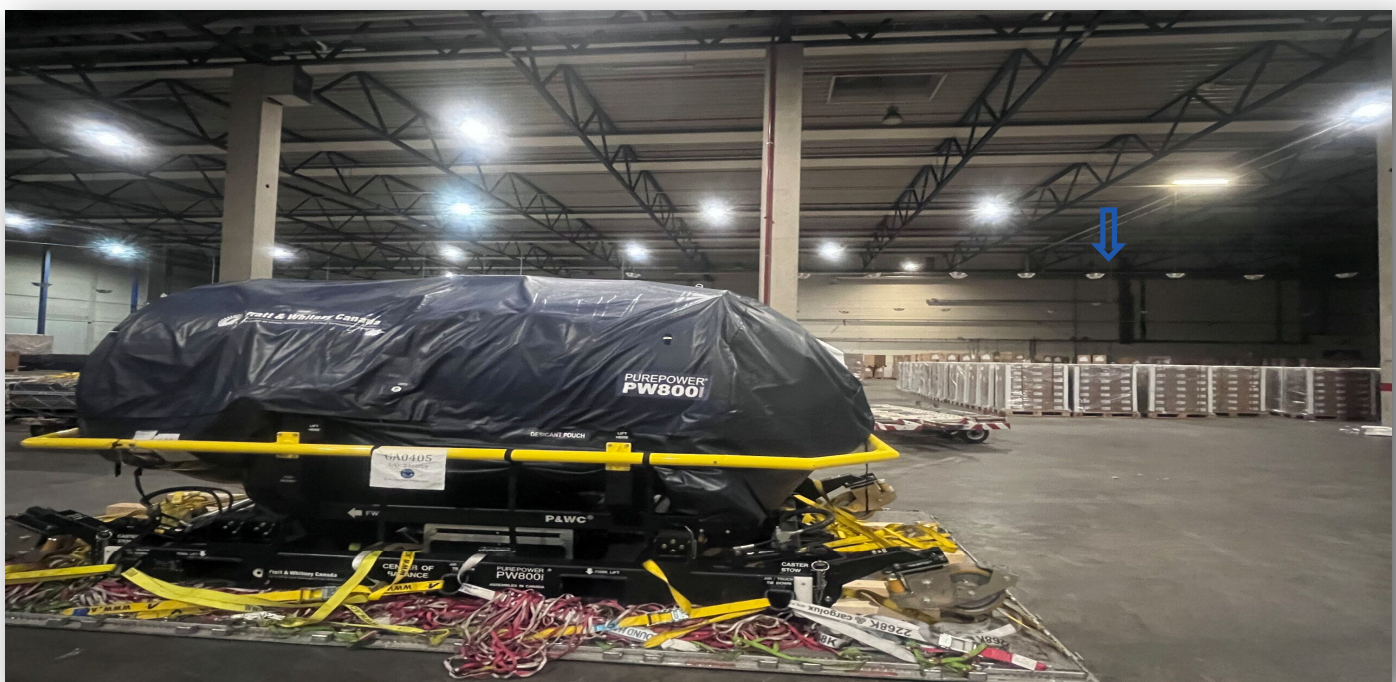
M&M Aviation Logistics

Aviation Logistics has long been a special field in the service portfolio of Miltzer & Münch, and with a continually growing global network of M&M aviation teams and competent partners, M&M offers full service in all product categories: From Aircraft on Ground (AOG) repair services to the transport of entire engines and other oversized cargo, including customs clearance, transport insurance and pre- and on-carriage at pick up or destination.

Experienced teams at different airports all over Germany assure fast handling of AOG orders 24/7; the teams work with selected carriers and have access to competitive rates. The online Control Tower platform allows real-time shipment information and insight into status and documents.

Miltzer & Münch is a long-time IATA and LBA Regulated Agent; operative processes are ISO 9001:2015 certified.

M&M Aviation Logistics guarantees flexibility and customer proximity with holistic solutions adapted to customer needs.



Business Update— M & M, Germany

To view the detailed presentation [click on the Link](#) ⇒ [M&M Aerospace Logistics 2023](#)

(in case, if you are unable to open the link, the presentation is attached with the email)

MILITZER & MÜNCH - AVIATION IN GERMANY



- One of the **key industries** in Germany
- One of the strongest and fastest growing industries
- A top global player thanks to **innovation and technologies**
- Government subsidizes research and development projects
- Place of **important exhibitions**, including
 - ILA (International Aerospace Exhibition)
 - Aircraft Interiors Expo
 - Airtec (Aerospace Supplier Exhibition)
 - Aero (General Aviation)
- **Engine manufacturers** like MTU and Rolls-Royce
- Lufthansa Technik – market leader in **MRO**
- Several manufacturers of GA leisure aircraft

17% of all delivered aircraft have a German origin

20% of the world's net product of the aerospace industry accounts for Germany

100% Every modern aircraft contains German technology

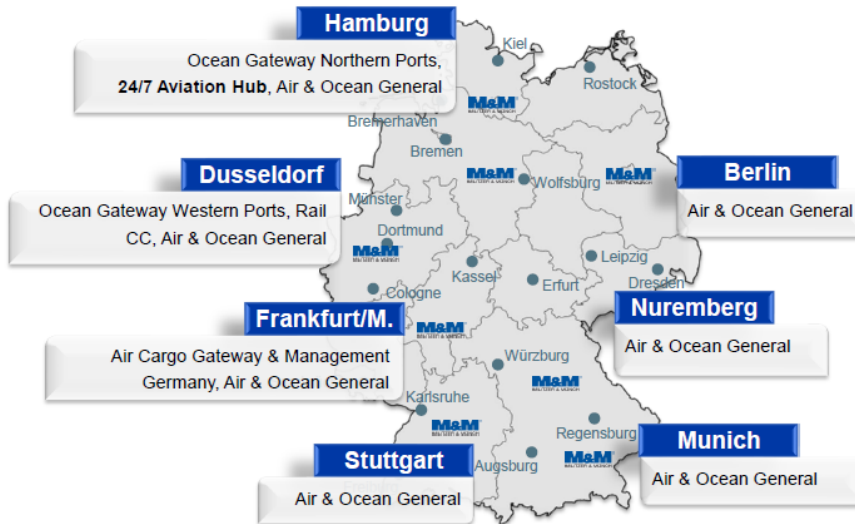
OUR SERVICE – YOUR ADVANTAGES



- ✓ Over **20 years of experience** in supporting the aviation industry
- ✓ Growing global network of M&M aviation teams and competent partners
- ✓ 1 provider for all product categories: From AOGs over engines to oversized cargo
- ✓ **All-in-one service** – from AOGs and engines to custom clearance and transport insurances
- ✓ Experienced teams at different airports all over Germany for fast handling of AOGs
- ✓ **24/7 AOG-Service** – we are available also on weekends & holidays
- ✓ Carefully selected carriers & access to competitive rates
- ✓ **Control Tower online platform** – fast access to shipment information, status and documents from anywhere at any time
- ✓ IATA agent & LBA regulated agent
- ✓ ISO 9001:2015 certified quality management system & continuous process improvements
- ✓ **Flexibility and customer proximity** – holistic solutions adapted to your needs

Business Update— M & M, Germany

M&M AIR SEA CARGO – GERMANY



Aviation Hub 24/7

mum-hamair-export@mumnet.com

AOG Contact

aog.ham@mumnet.com

+49 177 9147129

YOUR CONTACT - PROJECT MANAGER AVIATION



▪ Charlotte Duerr

eva-charlotte.duerr@mumnet.com

+49 (0)69 69 5000 - 58

+49 (0)170 372 4802



Business Update— M & M, Germany

MILITZER & MÜNCH GERMANY

YOUR RELIABLE PARTNER FOR RAIL TRANSPORTS BETWEEN CHINA AND GERMANY

Are you looking for an alternative to transport via air or sea?

With over three decades of experience in China, we will be happy to support you with our German-Chinese speaking team. Benefit from our individual consultancy and our FCL and LCL rail services from and to China.

With long-time expertise, in-depth market knowledge and the entire product portfolio and fully flexible solutions adapted to your needs, we want to become your competent and specialized logistics partner.

OUR SERVICES

- » Daily FCL departures eastbound / westbound;
- » Weekly LCL departures eastbound / westbound;
- » No-hassle customs clearance in transit countries;
- » Hanging goods and reefer transports on request
- » GDP for the transport of medical goods;
- » Live GPS tracking system on request
- » Services covering the EU, all of China and neighboring countries (Vietnam, Korea, Japan etc.);
- » Storage and transport-worthy packaging;» Longtime partnerships with insurance companies for suitable transport insurance;

YOUR ADVANTAGES

- » More cost-effective than airfreight;
- » Faster than sea freight;
- » Personal customer care provided by an experienced team based in Düsseldorf
- » German-Chinese speaking people in China and Germany;
- » Eight Militzer & Münch branch offices in China;
- » Over 30 years of experience in China imports and exports;
- » Experienced German and Chinese operations teams.

Contact your M&M RAIL Manager for more information

M&M air sea cargo GmbH

Contact: Mr. Michael Spitzlei
Head of business segment rail

Email: sales-rail-germany@mumnet.com

Phone: +49 (211) 437186 24

Contact: Ms. Beza Zeway

Operations Manager Rail Freight

Phone: +49 (211) 437186 12



Business Update— RIF Group

**Delivering Excellence
Every time Everywhere**



The arrival of a new year is the perfect time to evaluate and refine your cargo forwarding operations. 🌍

RIF Group stands ready to assist, recognising the growing intricacies of supply chains and the necessity for top-tier solutions.

For 2024 and beyond, we offer a spectrum of services—from logistics in the UK and mainland Europe to tailored European road freight expertise, and seamless international shipping connections. 🚢🌍

With a wealth of experience and expertise, we're more than just service providers; we're your trusted partners for success.

In a nutshell, let's make your projects thrive in the coming year.

Visit our website to discover how RIF Group can elevate your operations.



www.rifgroup.co.uk
T: +44 (0) 1932 753799
E: LON@rifworldwide.co.uk

Business Update— Premiere



14 TH ANNUAL DINNER 2023



After three long years, the 14TH Annual dinner of Premiere at 5stars Waldorf Astoria Hotel in Shanghai. Looking back on the past three years, we have gone through extraordinary times. Due to the COVID 19 , Premiere has not been able to hold a meaningful Annual Dinner for three years.

But after three years, we are finally reunited once again at this annual dinner . It's a momentous occasion where we can reflect on our efforts and challenges of the past three years, and celebrate our achievements and team spirit.



Business Update— Premiere



Now is the time for everyone to relax and enjoy this rare gathering & Big Lucy Draw total USD29,000.00

Let us collectively reminisce on our past accomplishments and prepare ourselves for future challenges. This annual conference will once again unit our team , we strive together towards a brighter future



Network Announcement

Dear All,

We would like to inform you all, that Kuntal Singh has been transferred to another Department and going forward **Anuja Fernandes** will be supporting the Network.

We have created a common Email Id for the Network Admin i.e. networkadmin@hcllogistics.eu for all future communications.

Request you all to please mark all your emails to the New network admin Email Id.

You can reach out to her on:

Email: networkadmin@hcllogistics.eu

Mobile: 8652180777

Please join us in congratulating Anuja Fernandes and wishing her success in this new role.

Change Management for Hyperion ARCS Netting

Overview of the To Be Process

CNC will share required **SOA format** in which Netting participants will have to share their data (O/s AR+AP at invoice level). On receipt of the SOA from Netting participants, CNC will then upload these SOA a shared file folder where, **EPM** will automatically process the file & then Records will match with counter party books. **CNC will share required SOA format in which Netting participants will have to share their data (O/s AR+AP at invoice level). On receipt of the SOA from Netting participants, CNC will then upload these SOA a shared file folder where, EPM will automatically process the file & then Records will match with counter party books.**

Data would be processed as and when data file (SOA template) would be placed in the shared folder for initial upload and changes. Post processing, matching report will be shared

We are currently planning to have 4 pre reporting and 1 final reporting to be executed during One ARCS Hyperion Netting cycle. The number of pre-cycles can be increased or decreased by CNC as and when required.

Basis matching done in **EPM** system, Netting Participants will receive **MATCHED**, **SUGGESTED MATCH** and **UNMATCHED** report at invoice level during all the netting cycles (Pre & Final run)

Basis Pre Reports shared by CNC, Netting Participant can perform their Follow-up with counter parties on their **SUGGESTED MATCH** and **UNMATCHED** transactions, They can add approved AP invoices in **SOA template** & follow-up with counter parties for their unapproved AR invoices as mentioned in unmatched report. For Next Pre-run or Final Run, Netting participants will have to share their Revised **SOA template** CNC and the same will be uploaded in Replace Mode for the participant's complete data. If CNC doesn't receive **Revised** version of your SOA then last received version in that month Netting will be considered for matching.

On Final day of the run, Final Matched Transactions and Final Netting Settlement report will be shared by CNC via e-mail.

Netting Participants will book manual netting vouchers in their ERP as being done earlier, based on the Final Netting Settlement report shared by CNC. Settlement should be done "To / By" CNC as per amount mentioned in Settlement Report & Dates mentioned in Netting Calendar.

Change Management for Hyperion ARCS Netting

HYPERION BENEFITS

- Automated & Transparent Invoice approval process
- Dispute resolution at invoice level
- Proper Audit trail at invoice level for Balance confirmation
- Auto matching/ confirmation & auto Netting Journal booking
- No more holding back of approved invoices

FAQ's

Q1. How would I know if I made a mistake in the manual Excel upload template?

Ans: In Manual Excel SOA Template we have given Instructions on “How to fill Excel SOA” Users can read those Instructions carefully before updating SOA. Also we have develop a macro within SOA template which can validate SOA for all possible human errors and provide error log to users which enable them to correct their mistakes.

Q2. Do I need to control use of any special characters in the manual Excel upload template?

Ans: Yes, You can not use special characters like comma (,) & semi colon (;) anywhere in excel SOA template. Also you should not keep any single cell blank if you have use any invoice line. If there is no information to provide then you can use “NA”

Q3. What if the payable is not booked at all or payable is booked wrongly?

Ans: If any payable invoice is Approved but you have not mentioned in your initial SOA then you can add that invoice in your Revised SOA & share that with CNC in order to match that invoice in next Pre/Final Run. If you have booked any

Receivable or Payable invoice incorrectly then you need to correct that in your ERP system as well as in Revised SOA & share correct data with CNC in order to match those invoices in next Pre/Final Run

Q4. Will “Data Confidentiality” will be maintained during this Netting process?

Ans: Yes, 100% This Hyperion Netting Activity will be carried out by 3rd party vendor & Your Receivable & Payable data will not be shared within Network. In Pre & Final Reporting as well you will receive only those transactions data which is either in your books & in your counterparty books (which related to your office only) Hence Pls. be 100% assure about “Data Confidentiality”

HOLIDAYS around THE WORLD

Country	Date	Occasion
Germany, Lebanon, Italy, Australia, Uganda, Qatar, Taiwan, Netherlands, England, Scotland, Belgium, South Africa, Turkey, Portugal, Greece, Korea, Singapore, Mexico, Chile, Mauritius, Brazil, Indonesia, Philippines, Cyprus, Malaysia, Poland, Canada, Norway, Denmark	1st Jan	New Year's Day
Scotland	2nd Jan	2nd January
Mauritius	2nd Jan	New Year's Holiday
Germany	6th Jan	Three Wise Men
Lebanon	6th Jan	Armenian Christmas Day
Italy, Poland, Greece, Cyprus	6th Jan	Epiphany
Srilanka	15th Jan	Tamil Thai Pongal Day
Srilanka	25th Jan	Duruthu Full Moon Poya Day
Mauritius	25th Jan	Thaiposam Cavadee
Brazil	25th Jan	São Paulo's birthday City
Malaysia	25th Jan	Thaipusam
Australia	26th Jan	Australia Day
Uganda	26th Jan	Liberation Day
Brazil	26th Jan	Anniversary of the city of Santos